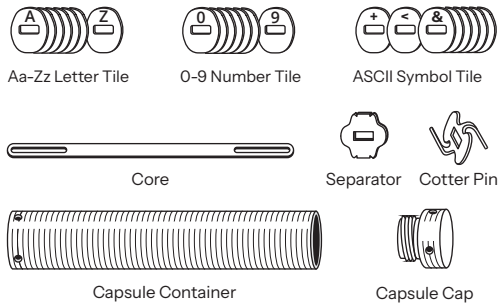
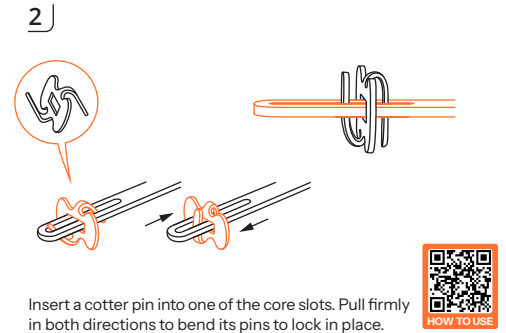


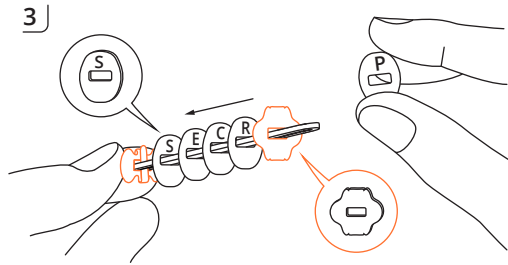
**Cryptosteel Seed24 User Guide.** Welcome to the Cryptosteel Seed 24 — a secure Metal Backup System for password and hardware wallet recovery. Before assembly, please ensure that all components are included and that you are in a private location, away from cameras or prying eyes.



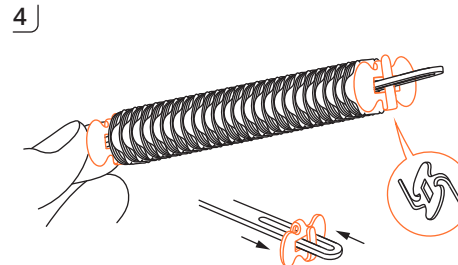
Lay tiles on a flat surface. Spell out your password or recovery seed, placing separators between words. For mnemonic seeds, shorten the words to the first four letters.



Insert a cotter pin into one of the core slots. Pull firmly in both directions to bend its pins to lock in place.

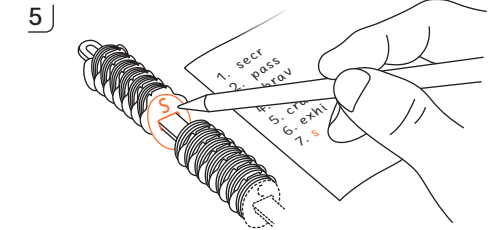


Slide password tiles in order onto the core, dividing the words with separators.



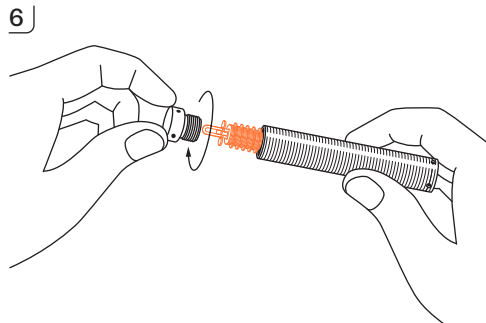
Once the complete password is assembled on the core, lock in the final cotter pin by pushing and pulling its pins. Check that both cotter pins are securely locked.

**Never remove the cotter pins to read your backup.**

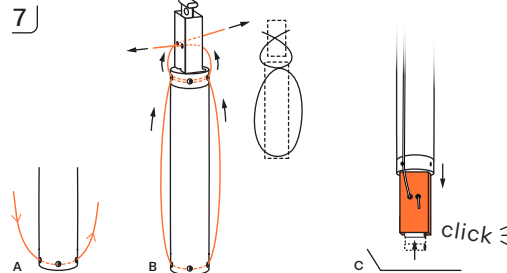


Go through the restore procedure to verify your metal backup: Read your backup, write it down on paper, and enter it into the hardware wallet. Perform the test restore procedure. If you completed it correctly, your data is safe. Destroy any paper copies of your password.

**Never remove the cotter pins to read your backup.**



Upgrade module: Insert the core into the shell capsule and firmly screw on the cap.



**Tamper Evidence Seal:** Thread the wire through holes at both ends of the capsule and into the plastic seal. Tighten the wires. Empress the plunger of the seal, until you hear a "click". You can press the unit face down on a hard surface. It is impossible to open the capsule without damaging the seal.



cryptosteel

Unlock more Step-by-Step video guides with ease! Scan the QR to access comprehensive tutorials and ensure your Cryptosteel experience is smooth and secure. Get the most out of your Cryptosteel with expert guidance!